



India Meteorological Department
Earth System Science Organisation
(Ministry of Earth Sciences)

BULLETIN NO.: 40 (BAY OF BENGAL 01/2020)

TIME OF ISSUE: 0600 HOURS IST

DATED: 21.05.2020

FROM: INDIA METEOROLOGICAL DEPARTMENT (FAX NO. 24643965/24699216/24623220)

TO: CONTROL ROOM, NDM, MINISTRY OF HOME AFFAIRS (FAX.NO. 23093750)

CONTROL ROOM NDMA (FAX.NO. 26701729)

CABINET SECRETARIAT (FAX.NO.23012284, 23018638)

PS TO HON'BLE MINISTER FOR S & T AND EARTH SCIENCES (FAX NO.23316745)

SECRETARY, MOES, (FAX NO. 24629777)

H.Q. (INTEGRATED DEFENCE STAFF AND CDS) (FAX NO. 23005137/23005147)

DIRECTOR GENERAL, DOORDARSHAN (23385843)

DIRECTOR GENERAL, AIR (23421105, 23421219)

PIB MOES (FAX NO. 23389042)

UNI (FAX NO. 23355841)

D.G. NATIONAL DISASTER RESPONSE FORCE (NDRF) (FAX NO. 26105912, 2436 3260)

DIRECTOR, PUNCTUALITY, INDIAN RAILWAYS (FAX NO. 23388503)

CHIEF SECRETARY, ANDAMAN & NICOBAR ISLANDS (FAX NO. 03192- 232656)

CHIEF SECRETARY, WEST BENGAL (FAX NO. 033-22144328)

CHIEF SECRETARY, GOVT. OF ODISHA (FAX NO. 0674 -2536660)

CHIEF SECRETARY, GOVT. OF ASSAM (FAX NO. 0361-2237200)

CHIEF SECRETARY, GOVT. OF MEGHALAYA (FAX NO. 0364 - 2225978)

CHIEF SECRETARY, GOVT. OF SIKKIM (FAX NO. 03592 -204323)

CHIEF SECRETARY, ANDHRA PRADESH (FAX NO. 0863-2441029, 08645-246600)

CHIEF SECRETARY, TAMIL NADU (FAX NO. 044-25672304)

CHIEF SECRETARY, PUDUCHERRY (FAX NO. 0413-2337575, 2334145)

Sub: Super Cyclonic Storm 'AMPHAN' (pronounced as UM-PUN) lay over Bangladesh as a Cyclonic Storm: Cyclone warning for West Bengal coast: Red Message.

The Severe Cyclonic Storm 'AMPHAN' (pronounced as **UM-PUN**) over Bangladesh and adjoining West Bengal coast moved north-northeastwards with a speed of 30 kmph during past 06 hours and lay centered at 0230 hrs IST of today, the 21st May 2020 near Lat. 24.2°N and Long. 89.3°E **over Bangladesh as a Cyclonic Storm** about 210 km north-northeast of Kolkata, 340 km north-northeast of Digha (West Bengal), 300 km north-northeast of Sagar Islands and 260 km north-northwest of Khepupara (Bangladesh).

It is very likely to continue to move north-northeastwards and weaken further into a Deep Depression during next 03 hours and into a Depression during subsequent 06 hours.

Forecast track and intensity are given in the following table:

Date/Time(IST)	Position (Lat. °N/ long. °E)	Maximum sustained surface wind speed (Kmph)	Category of cyclonic disturbance
21.05.20/0230	24.2/89.3	80-90 gusting to 100	Cyclonic Storm
21.05.20/0530	24.6/89.5	60-70 gusting to 80	Cyclonic Storm
21.05.20/1130	26.0/90.3	30-40 gusting to 50	Depression

(1) Heavy rainfall Warning:

West Bengal

Light to moderate rainfall at a few places likely over Nadia and Murshidabad districts of Gangetic West Bengal during next 06 hours.

Spatial rainfall distribution: Isolated: <25%, A few: 26-50%, Many: 51-75%, Most: 76-100%
Rainfall amount (mm): Heavy rain: 64.5 – 115.5, Very heavy rain: 115.6 – 204.4, Extremely heavy rain: 204.5 or more.

Assam & Meghalaya

Light to moderate rainfall at most places with heavy to very heavy falls at a few places over the western districts of Assam & Meghalaya on 21st May.

(2) Wind warning

West Bengal

- **Squally wind, speed reaching 30 to 40 kmph gusting to 50 kmph very likely over Nadia and Murshidabad districts during next 06 hours. It is very likely to decrease during subsequent 06 hours.**

Deep Sea area

- Gale wind speed reaching 60-70 gusting to 80 kmph is prevailing over northern parts of northwest Bay of Bengal. It is likely to continue for next 06 hours. It will gradually decrease thereafter becoming Squally wind speed reaching 30-40 gusting to 50 kmph during subsequent 06 hours.

(3) Sea condition:

- Sea condition is rough to very rough over North Bay of Bengal and is likely to continue for next 12 hours.

(4) Fishermen Warning

- The fishermen are advised not to venture into North Bay of Bengal during next 12 hours. Also, fishermen are advised not to venture into North Bay of Bengal along and off North Odisha, West Bengal and adjoining Bangladesh coasts during next 12 hours.

Kindly visit www.rsmcnewdelhi.imd.gov.in and www.mausam.imd.gov.in for updates on the system.

Next Bulletin will be issued at 0830 hours IST of today, the 21st May, 2020.

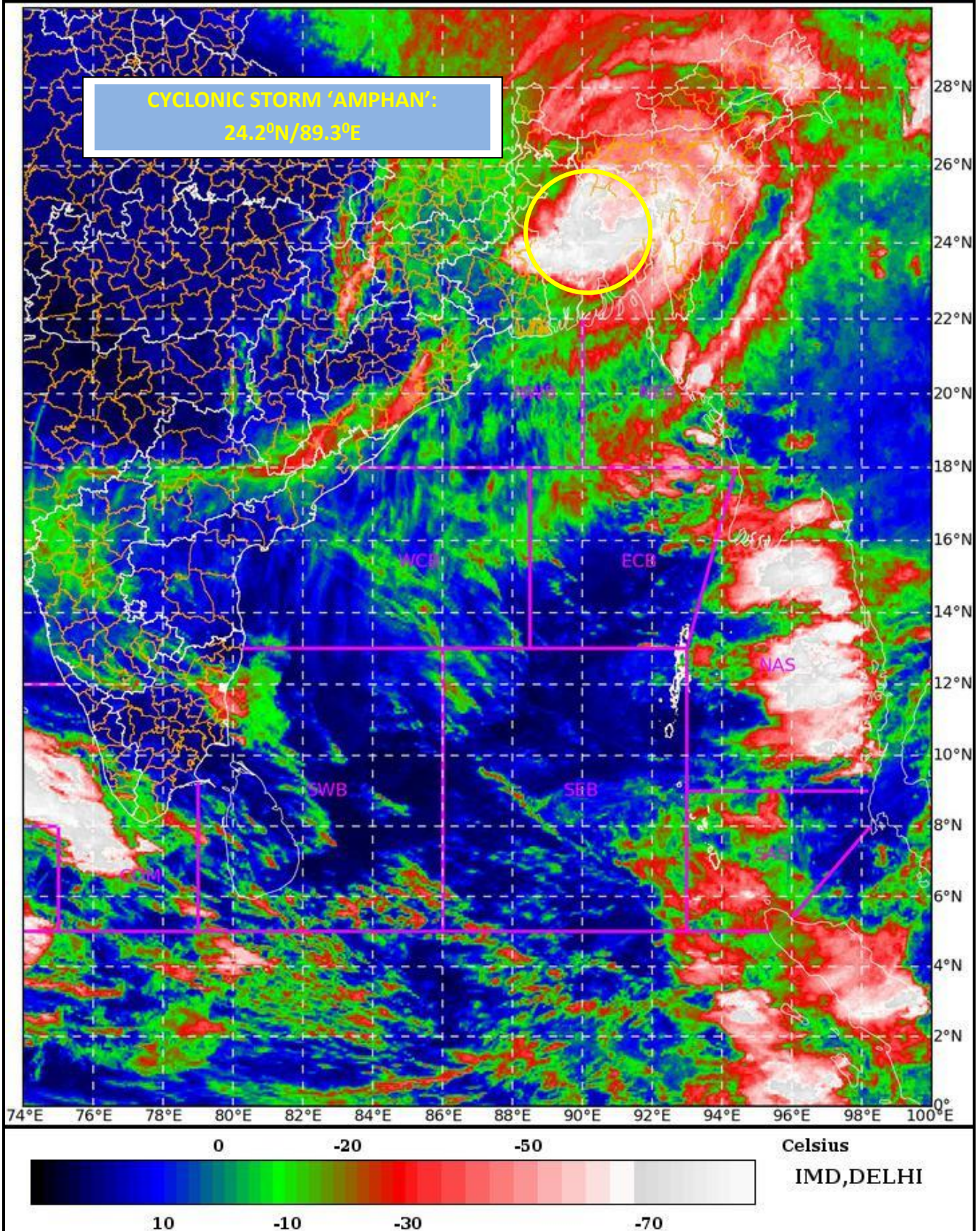
(V R Durai)
Scientist-E, RSMC, New Delhi

Copy to: CRS, Pune/ ACWC Chennai/ ACWC Kolkata/CWC Bhubaneswar/ /CWC Visakhapatnam

SAT : INSAT-3D IMG 20-05-2020/(2300 to 2326) GMT

IMG_TIR1_TEMP 10.8 um 21-05-2020/(0430 to 0456) IST

L1C Mercator

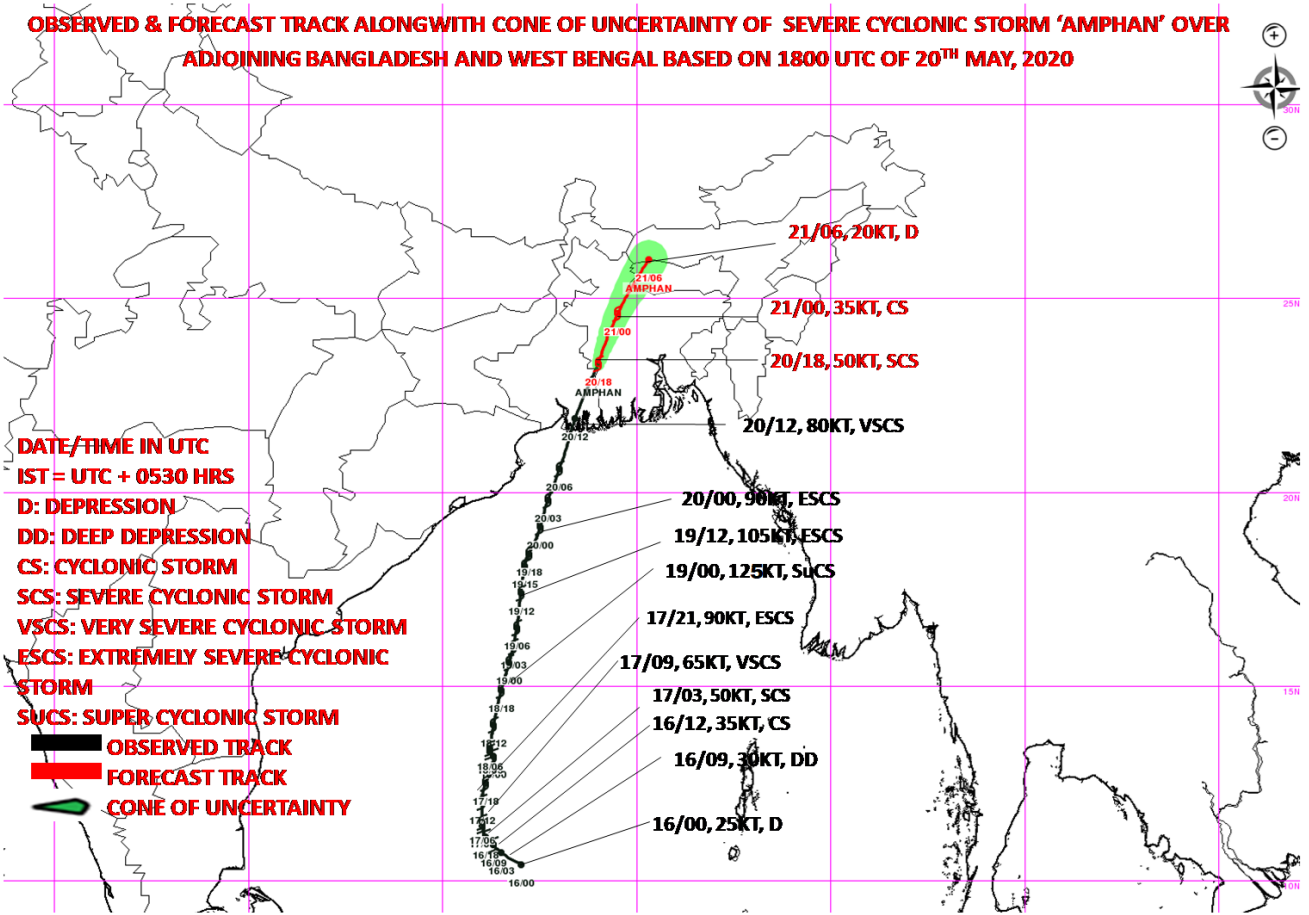


Legend: WCB – Westcentral Bay of Bengal

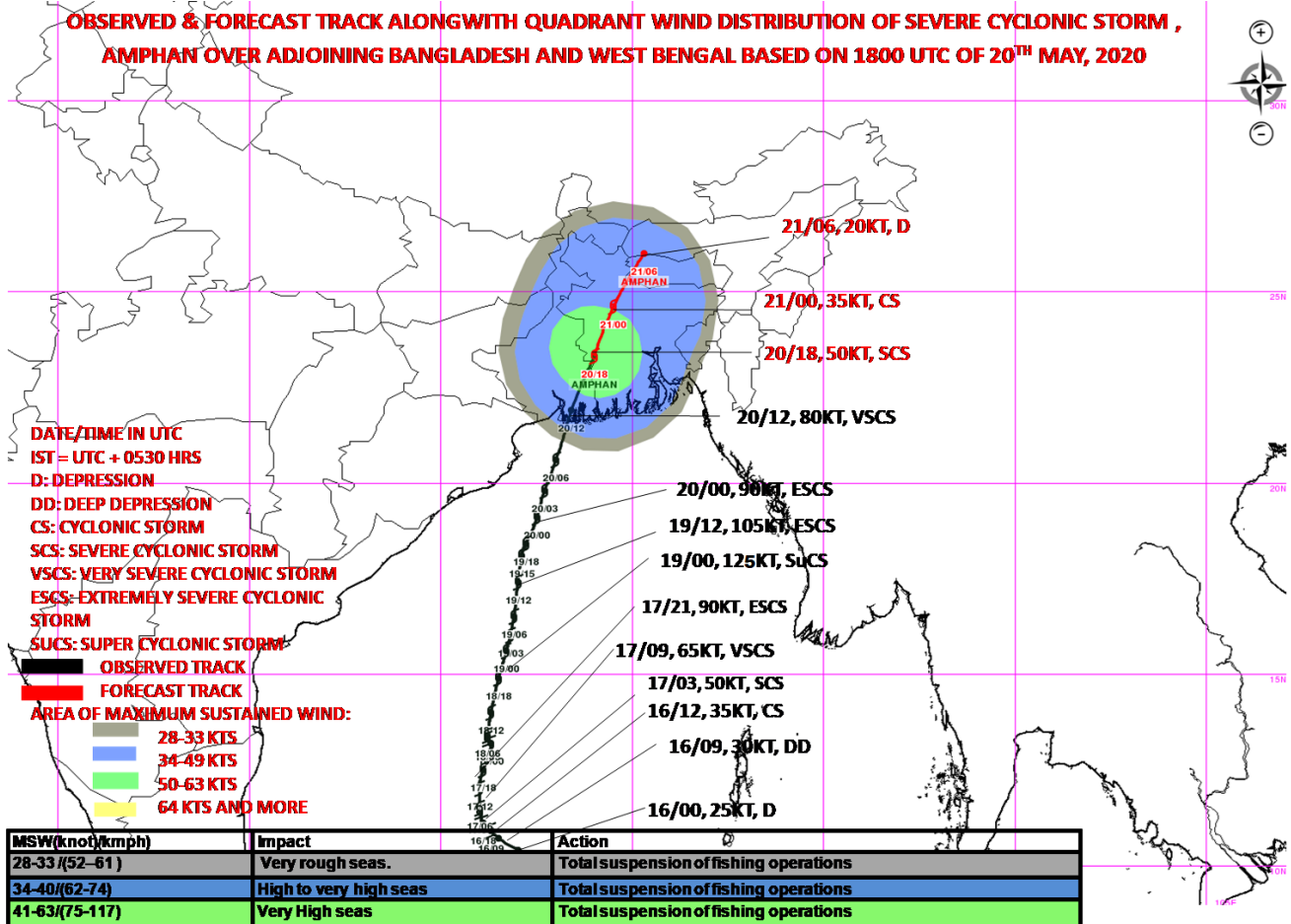
Spatial rainfall distribution: Isolated: <25%, A few: 26-50%, Many: 51-75%, Most: 76-100%
Rainfall amount (mm): Heavy rain: 64.5 – 115.5, Very heavy rain: 115.6 – 204.4, Extremely heavy rain: 204.5 or more.

NWB – Northwest Bay of Bengal

OBSERVED & FORECAST TRACK ALONGWITH CONE OF UNCERTAINTY OF SEVERE CYCLONIC STORM 'AMPHAN' OVER ADJOINING BANGLADESH AND WEST BENGAL BASED ON 1800 UTC OF 20TH MAY, 2020



OBSERVED & FORECAST TRACK ALONGWITH QUADRANT WIND DISTRIBUTION OF SEVERE CYCLONIC STORM , AMPHAN OVER ADJOINING BANGLADESH AND WEST BENGAL BASED ON 1800 UTC OF 20TH MAY, 2020



Spatial rainfall distribution: Isolated: <25%, A few: 26-50%, Many: 51-75%, Most: 76-100%

Rainfall amount (mm): Heavy rain: 64.5 – 115.5, Very heavy rain: 115.6 – 204.4, Extremely heavy rain: 204.5 or more.

Spatial rainfall distribution: Isolated: <25%, A few: 26-50%, Many: 51-75%, Most: 76-100%
Rainfall amount (mm): Heavy rain: 64.5 – 115.5, Very heavy rain: 115.6 – 204.4, Extremely heavy rain: 204.5 or more.